

JAC
DIESEL
LIGHT C
TRUCK

Cummins



PROVEN GLOBALLY + IN NZ:



TRIED + TRUSTED PARTS



Tough Frame + Suspension



Tough Transmission Options



Tough Axle + Power Train



The JAC Diesel Truck is equipped with the sought after **B series Cummins Diesel Engine**. A family of diesel engines produced by American manufacturer Cummins. In production since 1984, the B series engine family is intended for multiple applications on and off-highway, light-duty, and medium-duty. In the automotive industry, it is known for its use in high-use applications in trucks, buses and large pick up trucks in the states.

Your JAC truck is proudly supported by the best global brands and parts.

Whether you're being powered by a Cummins Diesel, a CATL EV Battery, or relying on the sought after Allison Auto transmission JAC has your back with top parts and suppliers including:



THE JAC OF YOUR TRADE

JAC trucks can be refitted into different bodies based on your needs including; refrigerated box, ambient box, flat deck, curtain sider, tipper and more.

With multiple wheelbases available, we can work with you to build the JAC of your trade.



Multiple wheelbases

Covering 3365/3845/4175/4475 mm wheelbases, there is a JAC truck to suit your needs.

JAC
WARRANTY

5^{Years}

YEARS
200,000 KM

*Whichever occurs first, warranty t&c's apply.

READY TO DRIVE

Overhead storage compartments

Intelligent and thoughtfully laid out comfortable cabins to make you feel right at home behind the wheel.

8 inch touch screen entertainment system, with multi-function integrated controls and options

Cup holders

Adjustable steering wheel

Manual and Allison 1000 Automatic options available

Smooth cab suspension designed to keep driver and passengers comfortable

Convenient cab tray for storage of loose items or paperwork

SAFETY

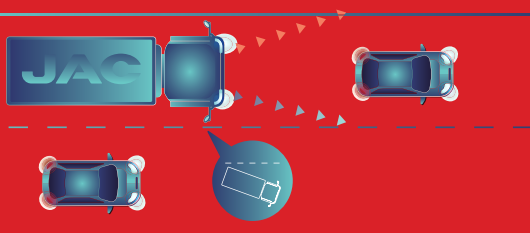
Dual Airbags

The dual airbag system is designed to improve occupant safety in the event of a collision.



Pre-tensioner Seatbelts

In the event of a collision, the pre-tensioner seatbelt system is designed to effectively cooperate with the airbag system to reduce impacts on the body.



ESC

Electronic Stability Control

ESC uses data from a number of sensors to monitor driver input and vehicle control. If it detects under-steer, over-steer or roll-over, ESC can override driver input, reduce power and/or apply individual wheel braking to assist the driver to maintain vehicle control.



Reinforced Cab Support

The longitudinal beam assembly of the front part of the JAC Truck cab support plate is designed as a closed section using high-rigidity steel. Additionally, an anti-collision girder steel is installed inside the door to ensure passengers' security.



Optimised Brake System + Air Brakes

The exhaust brake decreases braking times to make braking more reliable and safer. This also helps to prolong the lifespan of your brakes.

THE JAC OF YOUR TRADE



N90 Diesel	3365 wheelbase Automatic	3845 wheelbase Automatic	3845 wheelbase Manual	4175 wheelbase Manual	4475 wheelbase Automatic	4475 wheelbase Manual
WEIGHT						
GWW (kg)	9000 OR 5990 (5990 can be driven on a Car Licence)					
Tare Weight (kg)	2850	2880	2940	2955	3125	3170
ENGINE						
Model	Cummins B4.OEVID170					
Fuel	Diesel					
Emissions	Euro6					
Type	4 Cylinder -Turbocharged					
Displacement (cc)	4.0					
MOTOR PERFORMANCE						
Horsepower	165					
Max Power (kW / rpm)	125/2400			125/2400		
Max Torque (Nm / rpm)	600/1100-1800					
VEHICLE PERFORMANCE						
Max Speed (km/h)	110					
Max Gradability (%)	30					
TRANSMISSION						
Transmission Type	Automatic 6 Speed - Allison 1000	Manual 6 Speed with Clutch Assistance - ESO-6107		Automatic 6 Speed - Allison 1000	Manual 6 Speed with Clutch Assistance - ESO-6107	
CHASSIS FRAME						
Cold riveted ladder frame QSTE650-5 steel side members Parallel side rails and rivetless top flange	214*70*5mm - please refer to JAC Dealer for more information					
STEERING						
Steering Type	Recirculating Ball Type					
Power Steering	Y					
Turning Circle	12.2	13	13	15.6	16.4	16.4
AXLE CAPACITY						
Front Beam (kg)	3100					
Rear Beam (kg)	6600			6600		
Gear Ratio	4.33	3.909		4.33	3.909	
BRAKING						
Brake Type	Air Brake					
Parking Brake	Air Brake					
Brakes	Disc/Drum					
Exhaust Braking	Y					
SAFETY						
ABS - Anti-lock Braking System	Y					
ESC - Electronic Stability Control	Y					
Reverse Radar + Alert	Y					
Reverse Camera	Y					
DIMENSIONS						
Wheelbase (mm) A	3365	3845		4175	4475	
Front Overhang (mm) B	1110			1110		
Rear Overhang (mm) C	1510	2030		2030	2295	
Length (mm) D	5985	6945		7515	7880	
Cab Height (mm) E	2290					
Front Wheel Track (mm) F	1710					
Rear Axle Width (mm) G	2115					
Cab Width (mm) H	1995					
Outside Chassis Width (mm) I	850					
Cab to Rear of Chassis (mm) J	4300	5200		5800	6115	
Tyres	215/75R17.5					
Fuel Tank Capacity (L)	130					
WARRANTY						
Truck Warranty	5 Years / 200,000km - whichever occurs first - Warranty T&C's apply					

